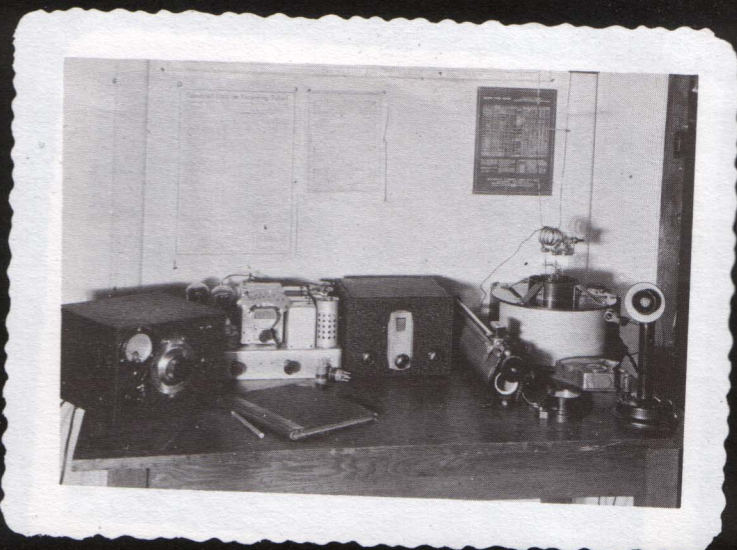
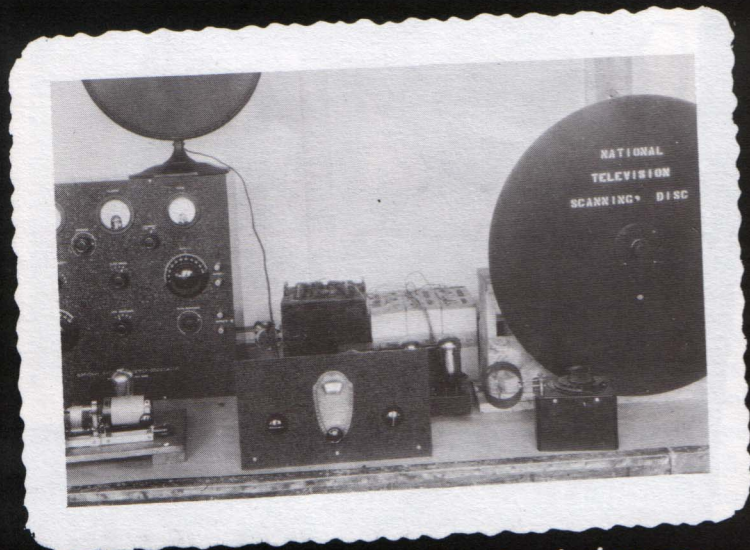


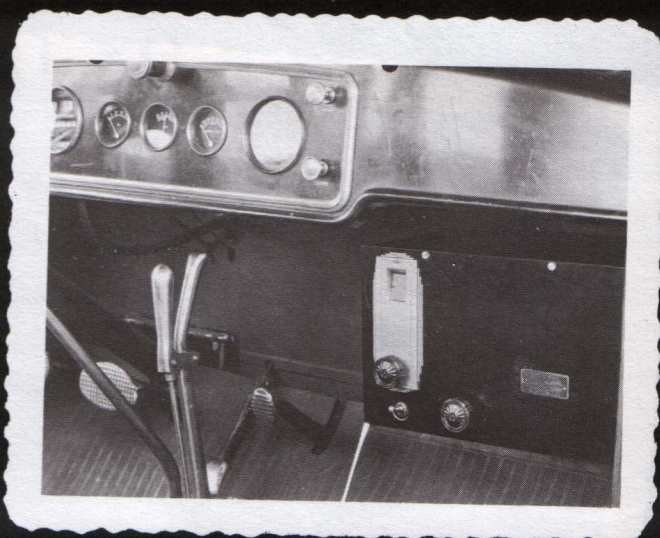
The SW-3 -- the receiver that started nine out of ten old-timers in amateur radio.



National's HFC 54-60 Mc converter (center) shown in an early 5 meter station.

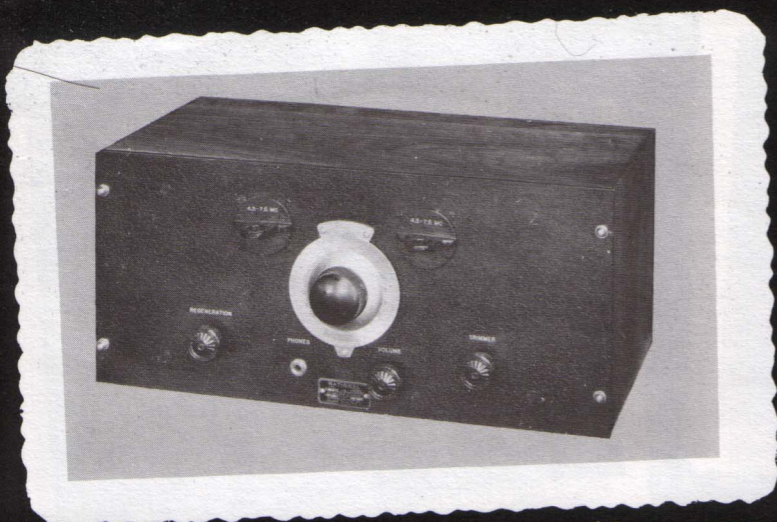


Early experiments in television -- the National "Flying Spot" scanner, about 1921.



A mobile version of the SW-45 -- the object in the left center of the photo must be the "grip-to-talk" switch!





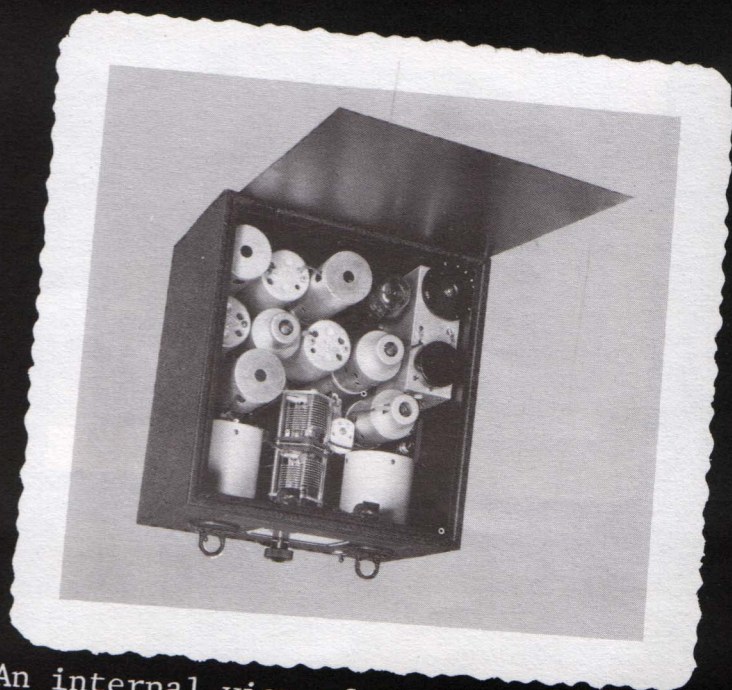
One of National's famous airline communication equipments -- the 1932 SW-58. 9 to 850 meters.



1933 -- The AGS 1.5-20 Mc. superheterodyne (right side of rack).



One of the most popular ham receivers in history -- the 1933 FB-7 seven tube superhet.



An internal view of the first ham-band receiver with a built-in crystal filter -- the National FB-X.